

# Complete Interior Makeover

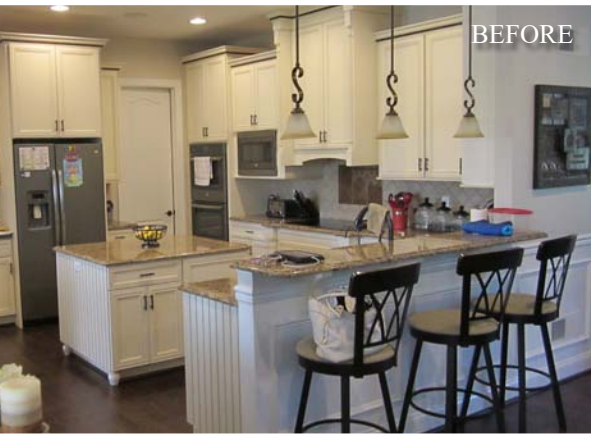
submitted by

EST 1972  
**Garman**  
BUILDERS



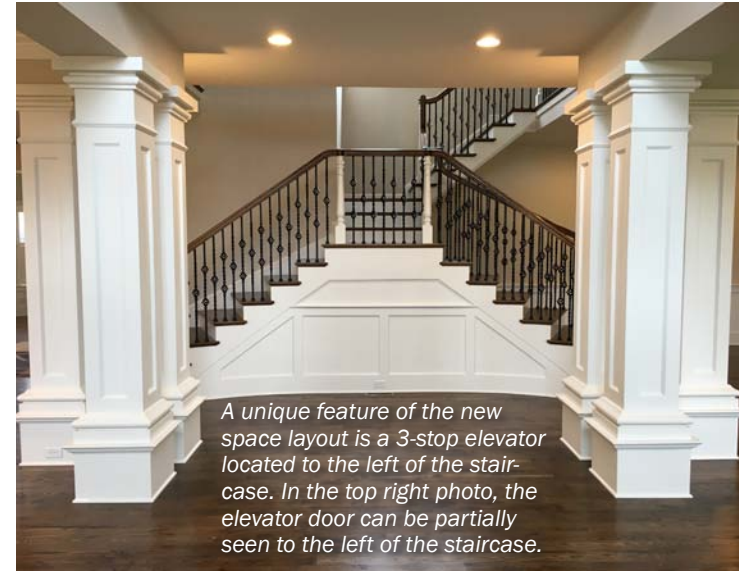
NEW HOMES RENOVATIONS RESTORATIONS  
(see ad on page 25)

Loving the location but not the house, this homeowner opted to completely redo the 1st floor, floor plan—including the demolition of *all* interior walls. Although the home's footprint didn't change, usable space was significantly increased along with much improved traffic flow. While most of the AFTER photos were taken prior to the furniture installation, you should be able to appreciate the space enhancements.



BEFORE

As a reference point, in the BEFORE photo on the left, the wall behind the right-side cabinets was removed. Expanding into a seldom used sunroom (beyond the pillars and to the window), the new kitchen has doubled in size.



A unique feature of the new space layout is a 3-stop elevator located to the left of the staircase. In the top right photo, the elevator door can be partially seen to the left of the staircase.



BEFORE

In the original floor plan (above), when walking in the front door (just beyond the archway on the right), the staircase rose from the far right. Upon entry now, you are greeted by a much more aesthetic and functional 2-directional staircase.



BEFORE

Above is a BEFORE view of the small living room (beyond the pillars). By expanding into the seldom-used formal dining room previously located behind the fireplace, the living room area was enlarged by approximately 300 square feet. The new dining area is now conveniently located adjacent to the kitchen.

