

more
Kitchen Expansions

submitted by



(see ad on inside front cover)



BEFORE

LEFT PAGE—Making this expansion possible was the removal of the dining room wall (behind the stove in the upper BEFORE photo and behind the china closet in the BEFORE photo beneath the caption). In addition to a more functional kitchen space, increased seating with the island, the openness creates a setting much more suitable for entertaining.



As a continuation of our GALLERY spread in R&A's Summer 2016 edition, the two kitchen expansion projects in this spread were also made possible by removing an interior wall. As you can see, combining an underutilized room (such as a dining room in both cases here), clears the way to create an open kitchen/dining space that will quickly become a family favorite.

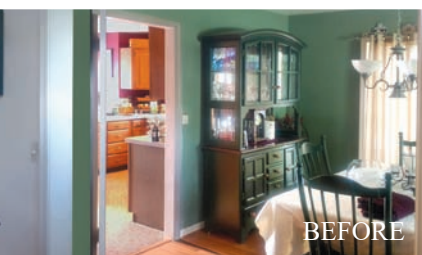


BEFORE

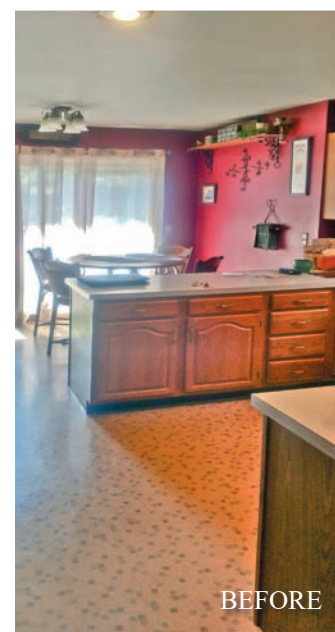


BEFORE

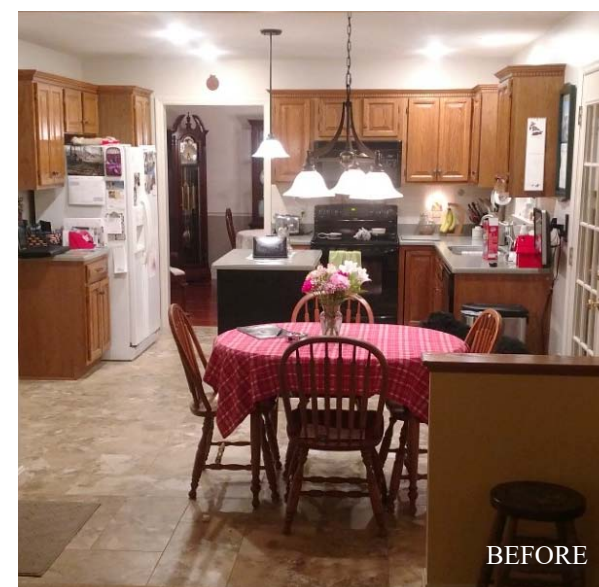
THIS PAGE—Like the project to the left, this expansion was made possible by the removal of an interior dining room wall (behind the stove above and behind the china closet to the immediate left). As a result, ample space was created to almost double the size of the original kitchen



BEFORE



BEFORE



BEFORE

